



enXco

Josh Lazarus
Permitting Specialist
SW Region – San Ramon, CA

July 2011





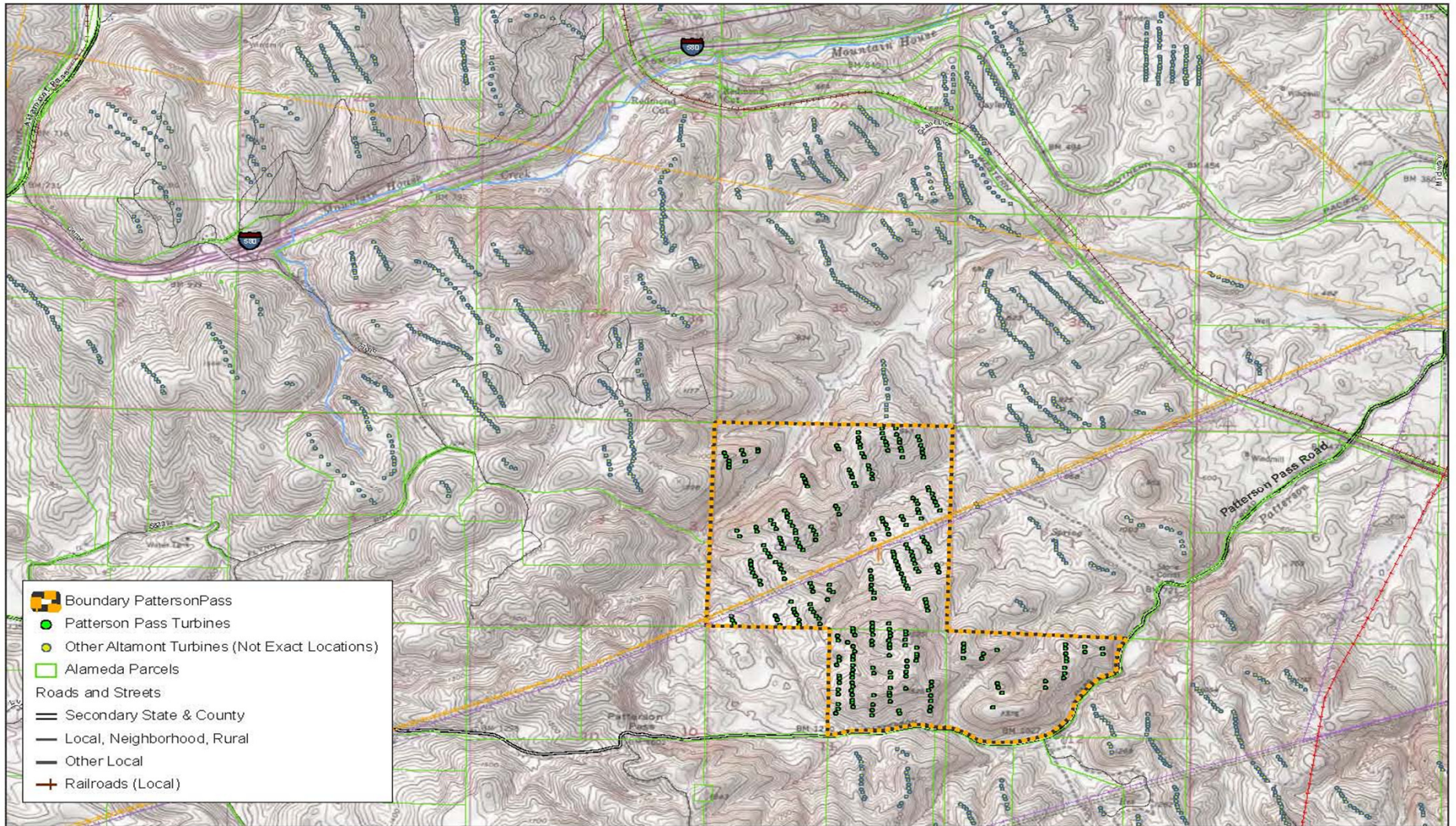
enXco Development

- ▶ enXco was founded in 1987 and is the largest provider of third party O&M services in North America. Servicing 5,300 turbines. Generating over 4,800 MW of electricity.
- ▶ enXco has been developing high-quality renewable energy projects throughout the United States for over 14 years, and has emerged as an industry leader in renewable energy project development. enXco has developed **31 wind projects**, generating **3,275+ MW**.
- ▶ enXco has successfully developed **47 renewable energy** projects in **15 states**, totaling over **3,325 + MW**, and has emerged as a leader in renewable energy project development.
- ▶ enXco strives to be at the forefront of conservation planning efforts. enXco is a member of the American Wind Wildlife Institute (AWWI) and key stakeholder at Desert Renewable Energy Conservation Plan (DRECP).



Patterson Pass Wind Farm

- ▶ The Patterson Pass Wind Farm is 21.1 MW and has been operational since 1984.
- ▶ The Patterson Pass Wind Farm is located in Alameda County at the eastern portion of the APWRA, south of Highway 580, off of Patterson Pass Road.
- ▶ The site is approximately 1000 acres of enXco owned land. O&M facilities and infrastructure are located on site and owned by enXco.
- ▶ The project is composed of Nordank and Bonus 65kW tubular tower WTGs . There are currently 319 turbines operational.



0 0.25 0.5 1 Miles

