

# Small Raptor Probability of Removal Straw Man Analyses

Jesse Schwartz  
Portland, Oregon

September 27, 2011



# Overview

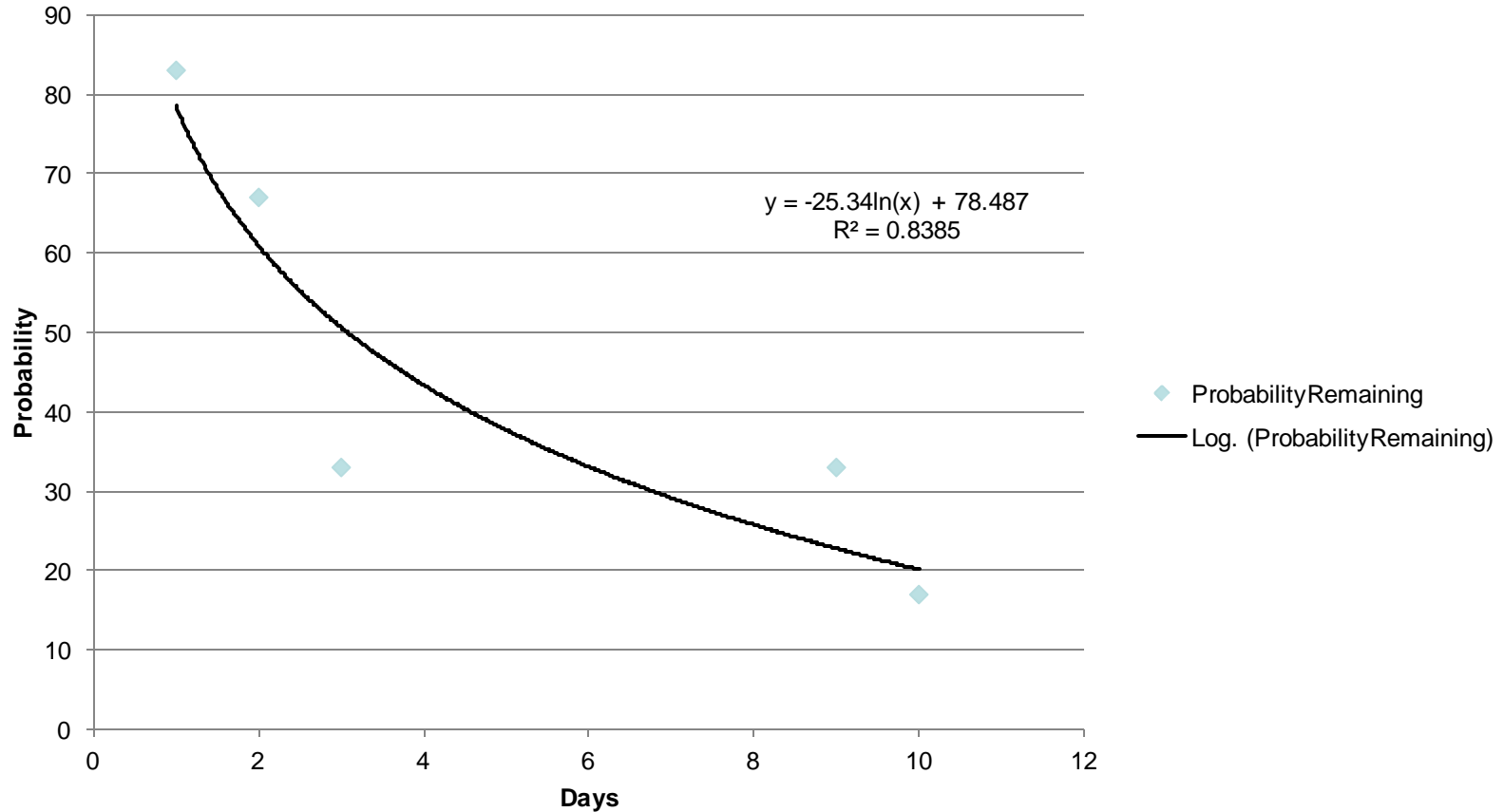
- Small raptors removed within two weeks
- Small raptors followed past two weeks
- Survival functions

# Small Raptors Removed Within Two Weeks

FatalityNumber	Species	Flesh	Eyes	RemovalDay	Censor	Percent
20110216-01	"AMKE"		1	1	1	0 0.833333
X10-022	"AMKE"		1	1	2	0 0.666667
20081106-01	"AMKE"		1	2	3	0 0.5
KB20080327-01	BUOW		1	1	3	0 0.333333
KB20070917-03	BUOW		1	1	10	0 0.166667

# Logarithmic Fit of Two Week Data

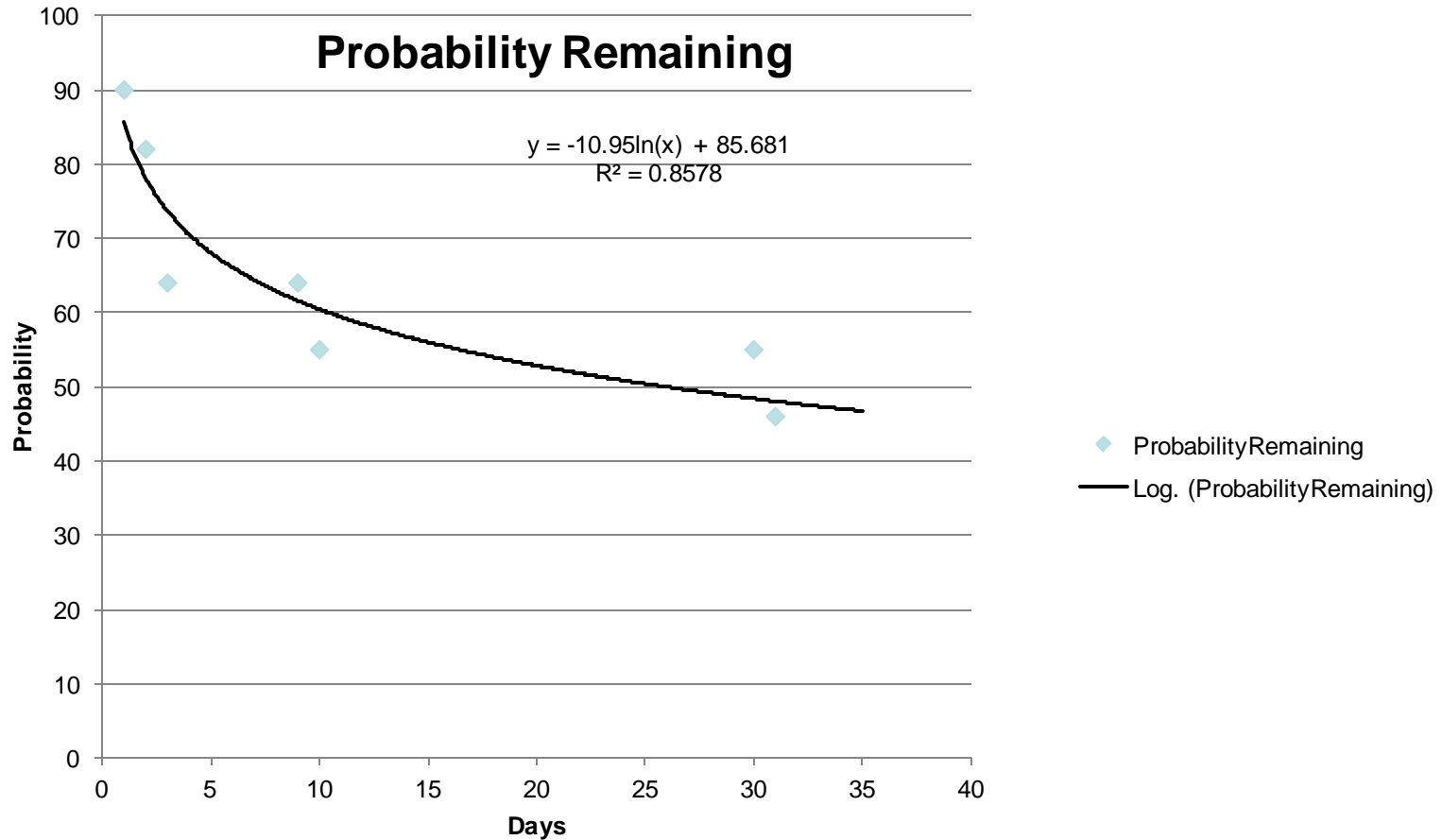
## ProbabilityRemaining



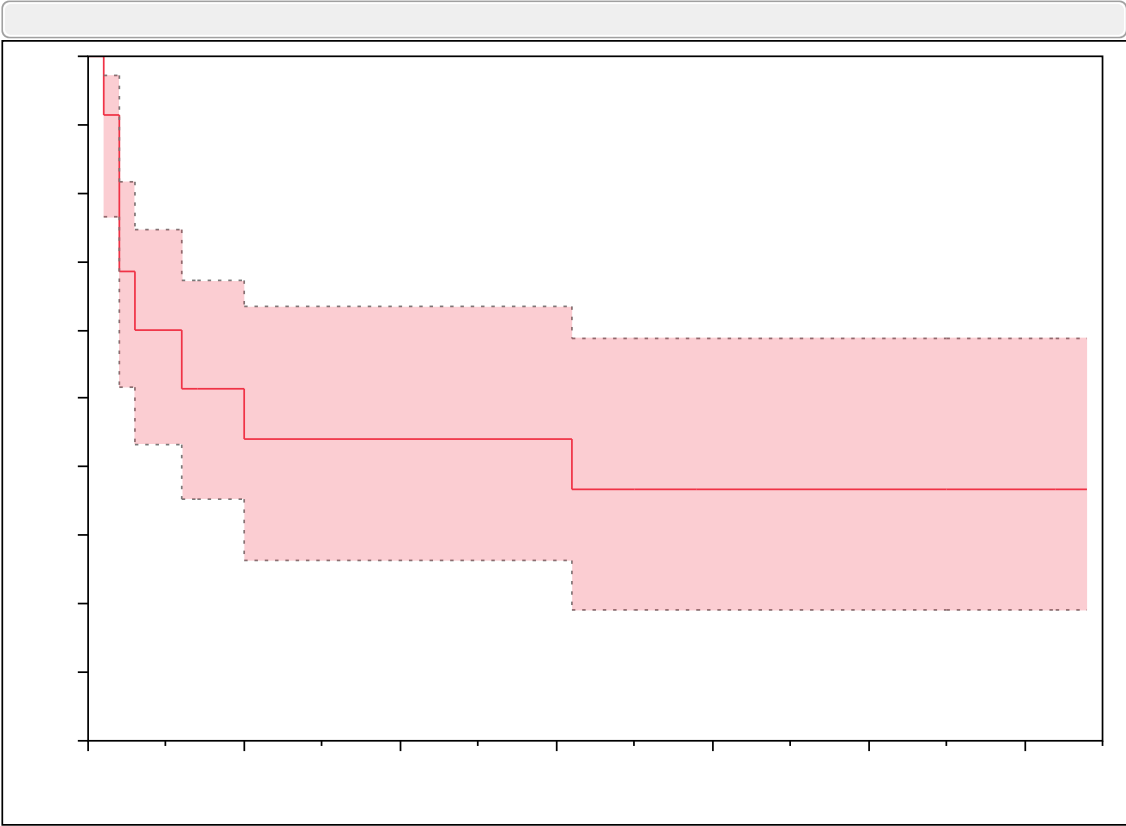
# Small Raptors Monitored One Week or More

Fatality Number	Species	Flesh	Eyes	RemovalDay	Censor	Percent	Probability Of Removal
20110216-01	"AMKE"	1	1	1	0	0.909091	0.090909
X10-022	"AMKE"	1	1	2	0	0.818182	0.181818
20081106-01	"AMKE"	1	2	3	0	0.727273	0.272727
KB20080327-01	BUOW	1	1	3	0	0.636364	0.363636
KB20070917-03	BUOW	1	1	10	0	0.545455	0.454545
KB20070929-01	"AMKE"	1	2	31	0	0.454545	0.545455
20080827-01	BUOW	1	2	35	1	0.454545	0.545455
20080403-05	BUOW	1	2	39	1	0.454545	0.545455
20097007-02	BUOW	1	1	55	1	0.454545	0.545455
20081021-06	"AMKE"	1	2	62	1	0.454545	0.545455
20090319-01	BUOW	1	1	64	1	0.454545	0.545455

# Logarithmic Fit of All Data



# Survival Curve



Three empty rectangular boxes for notes or comments.